



CATHERINE WRIGHT

WRIGHT DESIGN  
INTERIORS

## **Interior Design Portfolio**

# Table of Contents



## 01 About Me



## 02 Woodbury New Construction



## 03 Minneapolis Rambler Remodel



## 04 Nassau, Bahamas New Condo



## 05 Contact Information

# Catherine Wright Interior Designer Century College, A.A.S. of Interior Design, May 2024



**After a 25-year successful Finance career, I am making a switch to Interior Design, a life-long passion. I take into interior design a vast set of business skills and work ethic.** These include professionalism, leadership, presentation skills, teamwork, project management, work ethic, detail orientation, initiative, and continuous improvement. Business also provided global experience as I lived in London, England for 3 years and traveled to 40 countries. These experiences have broadened my design aesthetic being influenced by global culture, architecture, and art.

While focused on my Finance career, **I was either building a new personal home or remodeling one in my spare time.** I have always enjoyed creating interiors that bring beauty, comfort, and function to improve one's life. **I now focus my time solely on interior design bringing my vast business skills and global design aesthetic to design beautiful interior spaces with sophistication and functionality. I excel at space planning, AutoCAD, and SketchUp rendering.**

In addition to an A.A.S. of Interior Design from Century College, I have a B.S.B. of Accounting from the University of Minnesota and a C.P.A. (MN inactive). In my free time, I enjoy spending time with my family and friends, especially at our beach home in the Bahamas and global travel.



## Client Analysis

**New construction home in Woodbury, MN** with an office for a home Certified Public Accountant (CPA). Clients include Cindy and Roger Thompson (mid-30's) and their daughter (age 5). The main level will be finished during construction and the lower level will remain unfinished. They have requested a Flex room attached to their primary bedroom with bedroom access only. The home office meets the requirements for a publicly accessed home office and **will require an ADA bathroom, entry, and office.** They would like a dual entry to the home with the public using the front part of the home and a second private door accessing the home.

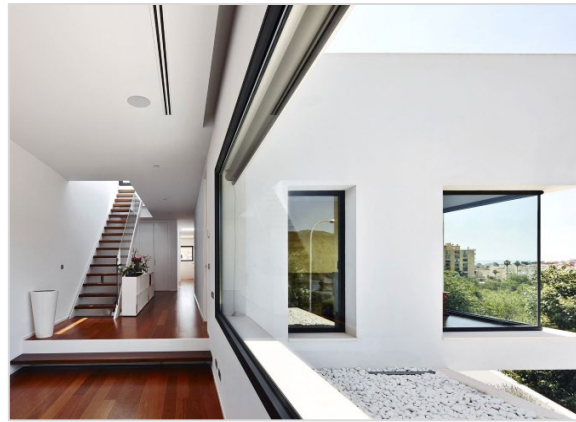
Their **design style is minimalism combined with a luxury aesthetic.** This will include high end finishes, harmony, and thoughtful composition. It will be characterized by **clean lines, architectural features, and a monochromatic palette with color used as an accent.**



Skills: Space planning, AutoCAD, and SketchUp rendering, and V-Ray rendering (self-taught learning)

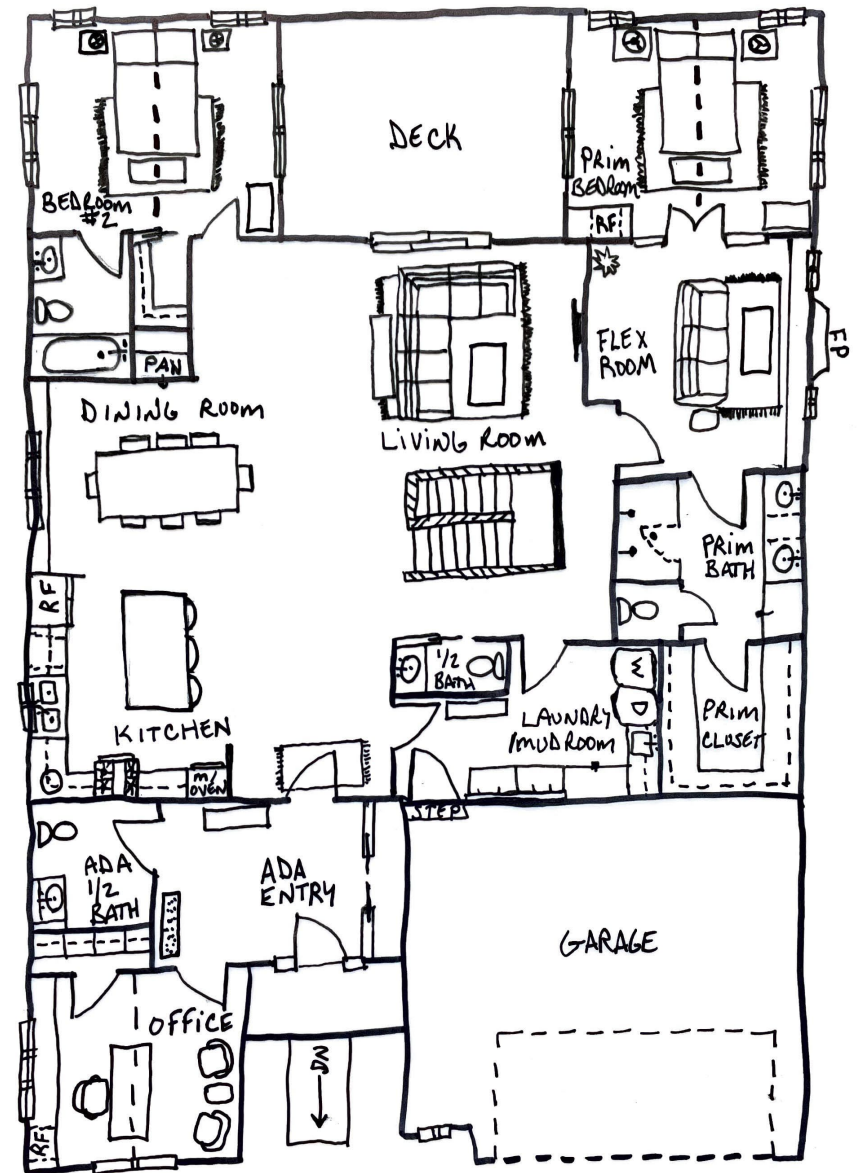
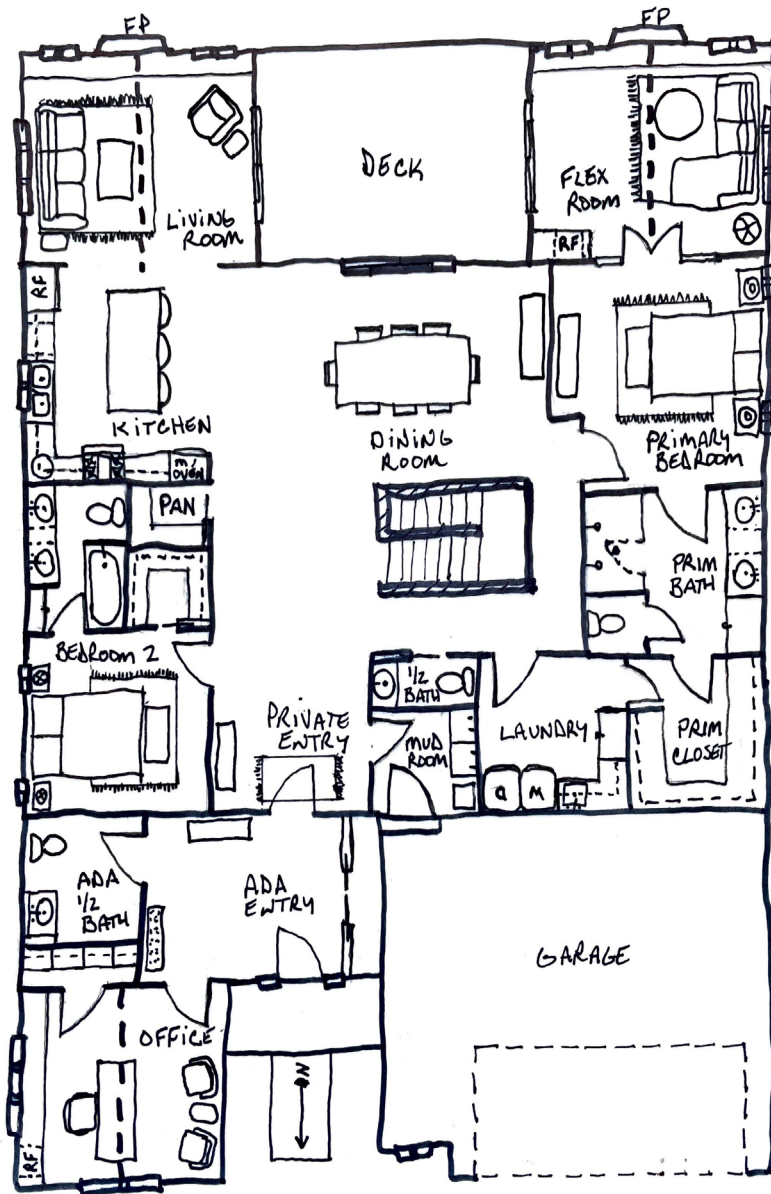
## 02 Woodbury New Construction





## Luxury, Edited.

A few luxurious, quality pieces leave a lasting impression. This design creates an interior space that captures the essence of **sophisticated elegance** with a **restraint** that focuses on a **few luxurious elements** and **architectural interest**. This is achieved by incorporating **muted gray, blue, and white textures**, with light wood, quartz, and black accents. This home features **vaulted ceilings with light wood** accents, quartz surfaces, modern fireplaces, hidden storage, and oversized windows that brighten the interior with **natural light**.



02 Woodbury New Construction  
Design Concept Hand Sketches



## Highlights

**ADA compliant office suite** with accessible bathroom

Individual locking file cabinets to **secure client information**

**Architectural feature** with staircase railings

**Vaulted ceilings** in office, living room and flex room

**In-floor heat** in all bathrooms

Insulated bedroom walls for **soundproofing**

**Linen Closets** in primary, bedroom 2 and ADA bathrooms

**Built-in cabinetry** in living room, flex room and office

(A)

(B)

(C)

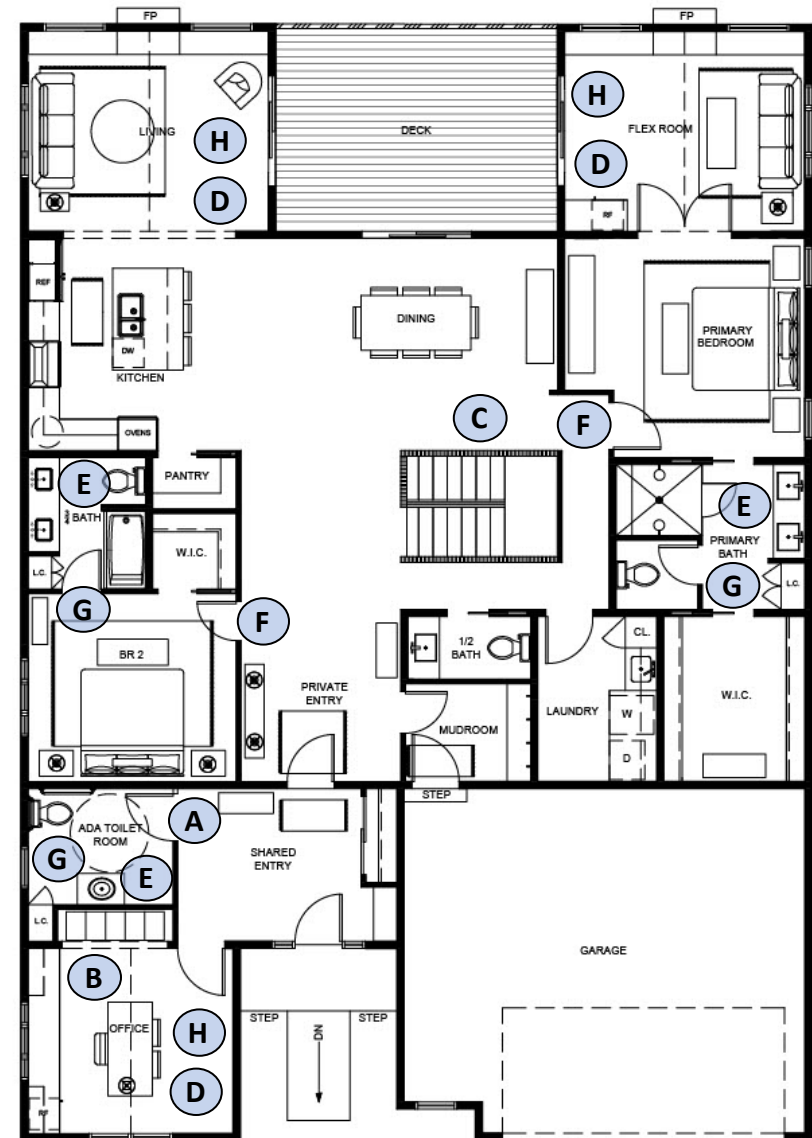
(D)

(E)

(F)

(G)

(H)



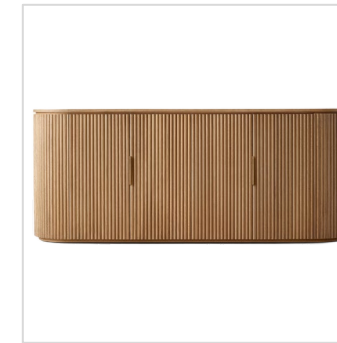
**02 Woodbury New Construction  
Space Plan with Features in AutoCAD**



Visual Comfort Grace 36  
Chandelier – 36" diameter



RH Byron Dining Table in  
Light Oak – 80" x 40"



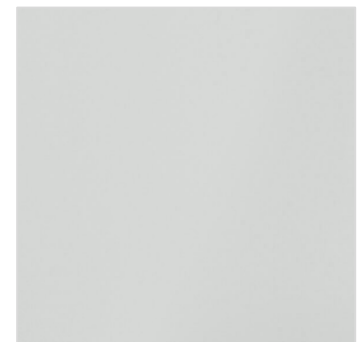
RH Byron Buffet in Light  
Oak – 72" x 20"



FK Wallcovering – York Skin  
Wallcovering Silver



FK Artistic Frame Venus Side  
Chair & Counter Stool



Sherwin Williams SW7661  
Reflection-Lt Gray-Eggshell

Features: Custom stair railing with floor to ceiling rails spaced three inches  
Skills: Space planning, Selections, and SketchUp rendering

## 02 Woodbury New Construction Dining Room/ Front Entry in SketchUp





Visual Comfort Agnes  
Small Black Pendent



Fabricut Classical 17 Aniline  
Leather – Counter Stools



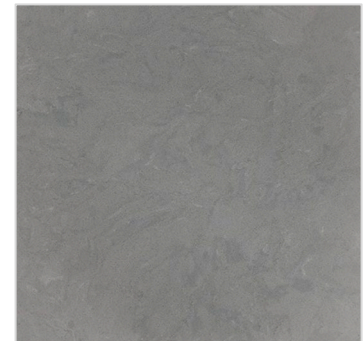
Floors by Steve – White Oak-  
3" plank – Gray Lt Oak



FK Artistic Frame Venus Side  
Chair & Counter Stool



Kohler – Crue Single-handle  
semi-prof black faucet



Cambria Quartz – Carrick  
Grey – Fireplace/Kitchen

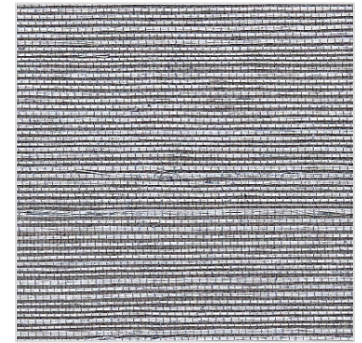
Features: Wolf & Subzero appliances, large island, and walk-in pantry  
Skills: Space planning, Selections, SketchUp, and V-Ray rendering

## 02 Woodbury New Construction Kitchen in SketchUp and V-Ray

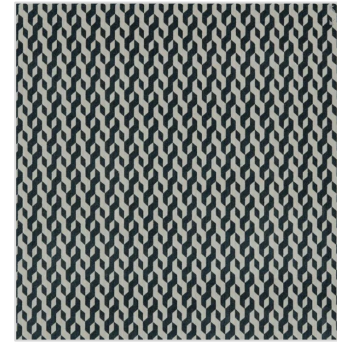




F.K. Artistic Frame  
Gateway Lounge Chair



FK Scalamandre Sisal Grass  
Wallcovering - Dusk



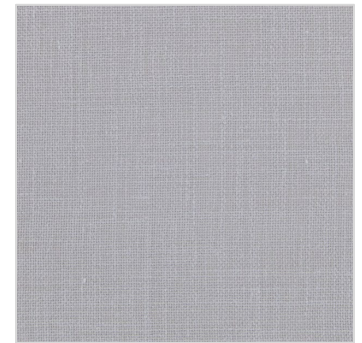
FK – Stout – Clearbrook 5  
Ocean Chair Fabric



FK Artistic Frame 90" Sofa



RH Byron Round Coffee  
Table Light Oak – 4' Diam



FK Fabricut Roscoe Stone Sofa  
Upholstery Performance

Features: Vaulted ceiling with wood fluting, fireplace floor to ceiling,  
Built-in cabinet bench for additional seating and storing toys  
Skills: Space planning, Selections, and SketchUp rendering

**02 Woodbury New Construction  
Living Room in SketchUp**

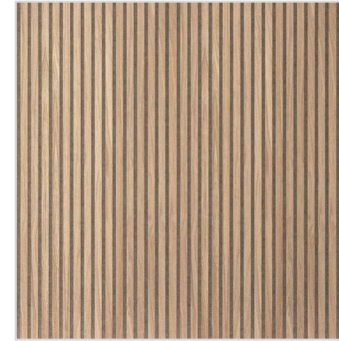




FK Artistic Frame Queen  
Bed Frame



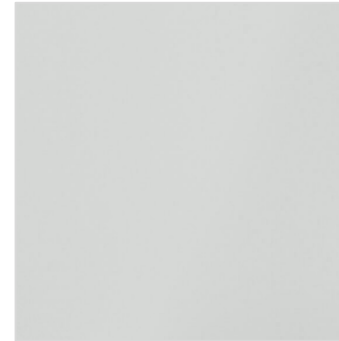
Visual Comfort Melange  
Black Pendent



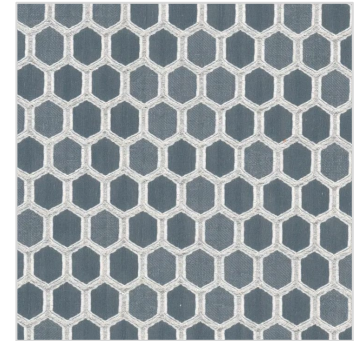
The Wood Veneer Wall –  
Oak Slat Fluted Tambour



Cyrus Rug – Artisan  
Nantes NTS01 – 8" x 10"



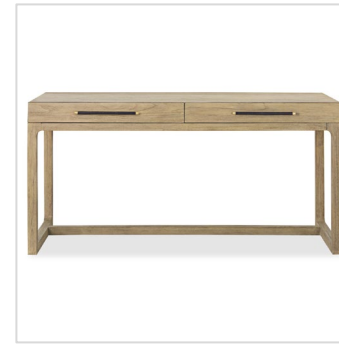
Sherwin Williams SW7661  
Reflection—Lt Gray-Eggshell



FK – Stout – Illogical 4 Deft  
Primary Bedding

Features: Wall with wood fluting, ceiling lighting, double doors to flex room and pocket door to primary bathroom  
Skills: Space planning, Selections, SketchUp and V-Ray rendering

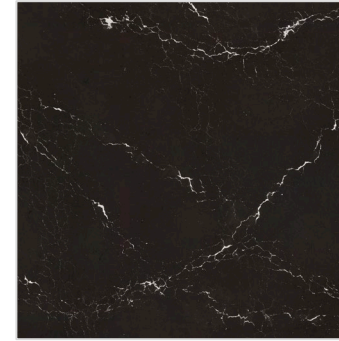
## 02 Woodbury New Construction Primary Bedroom in SketchUp & V-Ray



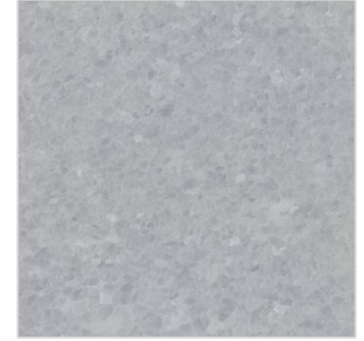
FK Brownstone Furniture  
Bennett Desk – 60" wide



FK Artistic Frame Venus Side  
Chair & Counter Stool



Cambria Quartz –  
Delamere Black



Ann Sacks Tile – Beau  
Monde Mosaics - Celeste



FK York–Candice Olson Terrain  
Tuck Stripe Wallcovering



FK York – Candice Olson –  
Terrain Frost Wallcovering

**Features:** ADA Compliant Office and Bathroom. Built-in wall desk, secure locking filing cabinets, vaulted ceiling with wood, and glass interior door to view client arrival

**Skills:** Space planning, Selections, and SketchUp rendering

**02 Woodbury New Construction  
ADA Bathroom and Office**



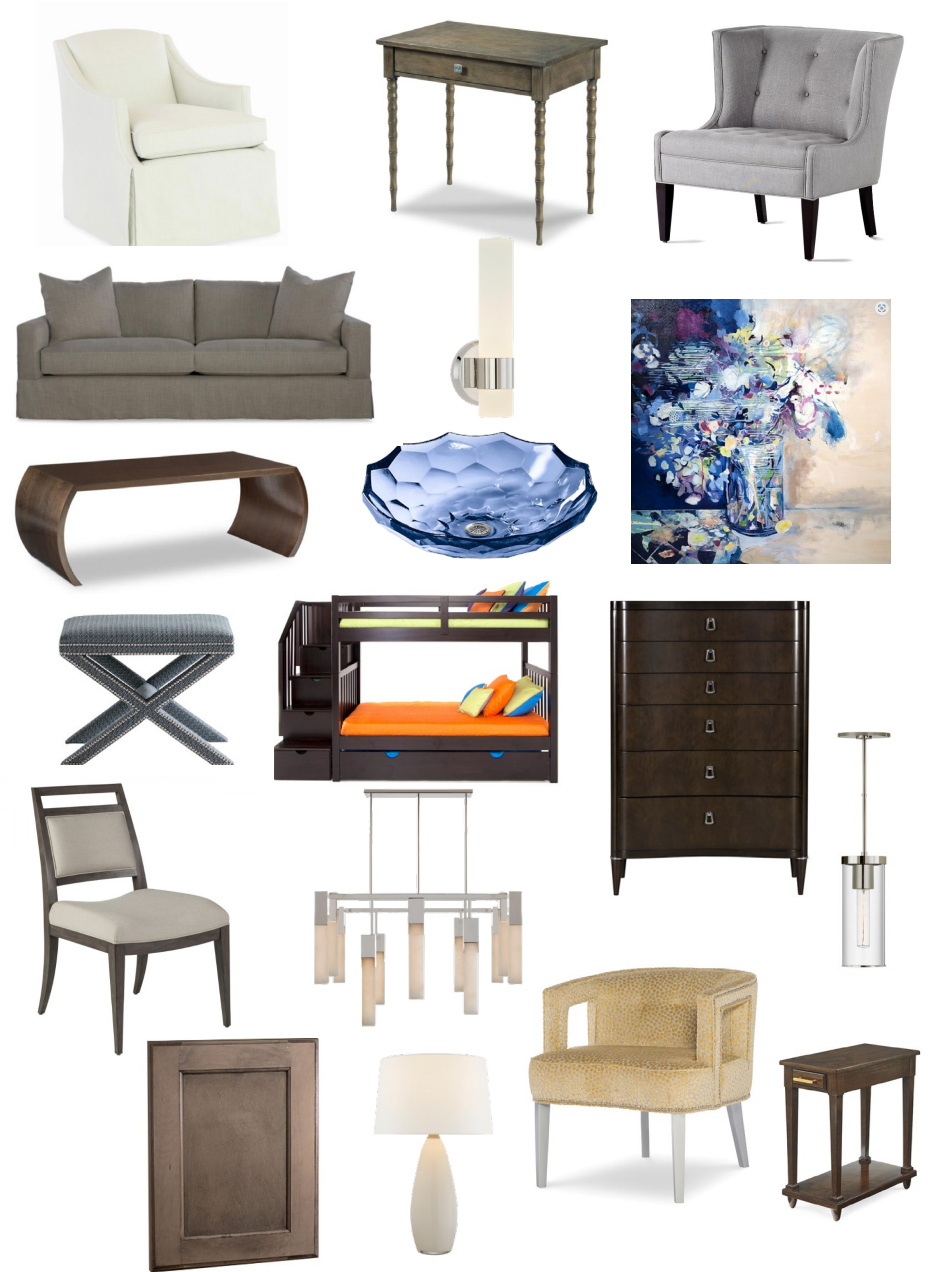
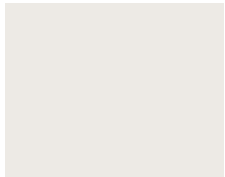


## Client Analysis

**Amanda Payton (35), a single Mother and her daughter, Rosalie (10)** are always on the go. Their home's space no longer works for them and moving to a new home is not feasible. They prefer to **remodel the main floor of their 1,000 square foot home**. Rosalie is social and loves to **host sleep overs** and needs a **place to study**. **One bathroom is no longer working** for them or their guests. Amanda needs the **flexibility to occasionally work from home**. She loves to cook, bake, and **host dinner parties**.

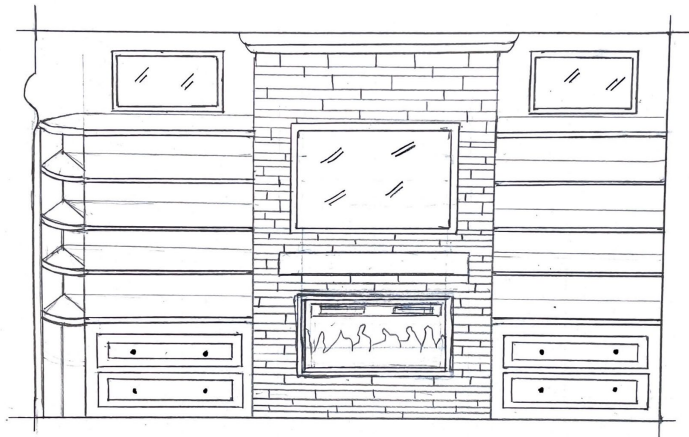
## Design Concept

Amanda gravitates towards a **Transitional/Modern design aesthetic**. She prefers a **cooler color palette** and needs her surroundings to give a calm, sophisticated vibe. **Sophisticated finishes and cool vibrant colors** will create an inviting space to entertain. The main floor remodel will **improve functionality** and sophistication meeting the lifestyle needs of the Payton family with a **larger kitchen and an additional powder room and mudroom**.

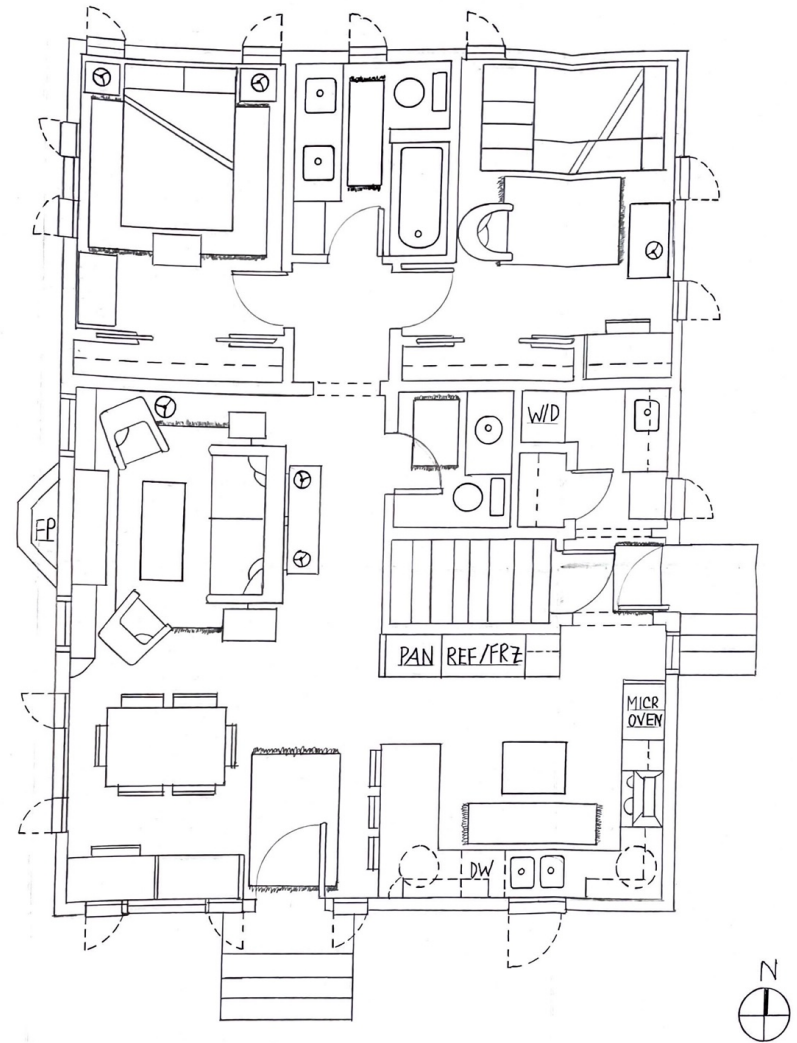




① KITCHEN ELEVATION  
1/2" = 1'-0"



② FIREPLACE ELEVATION  
1/2" = 1'-0"

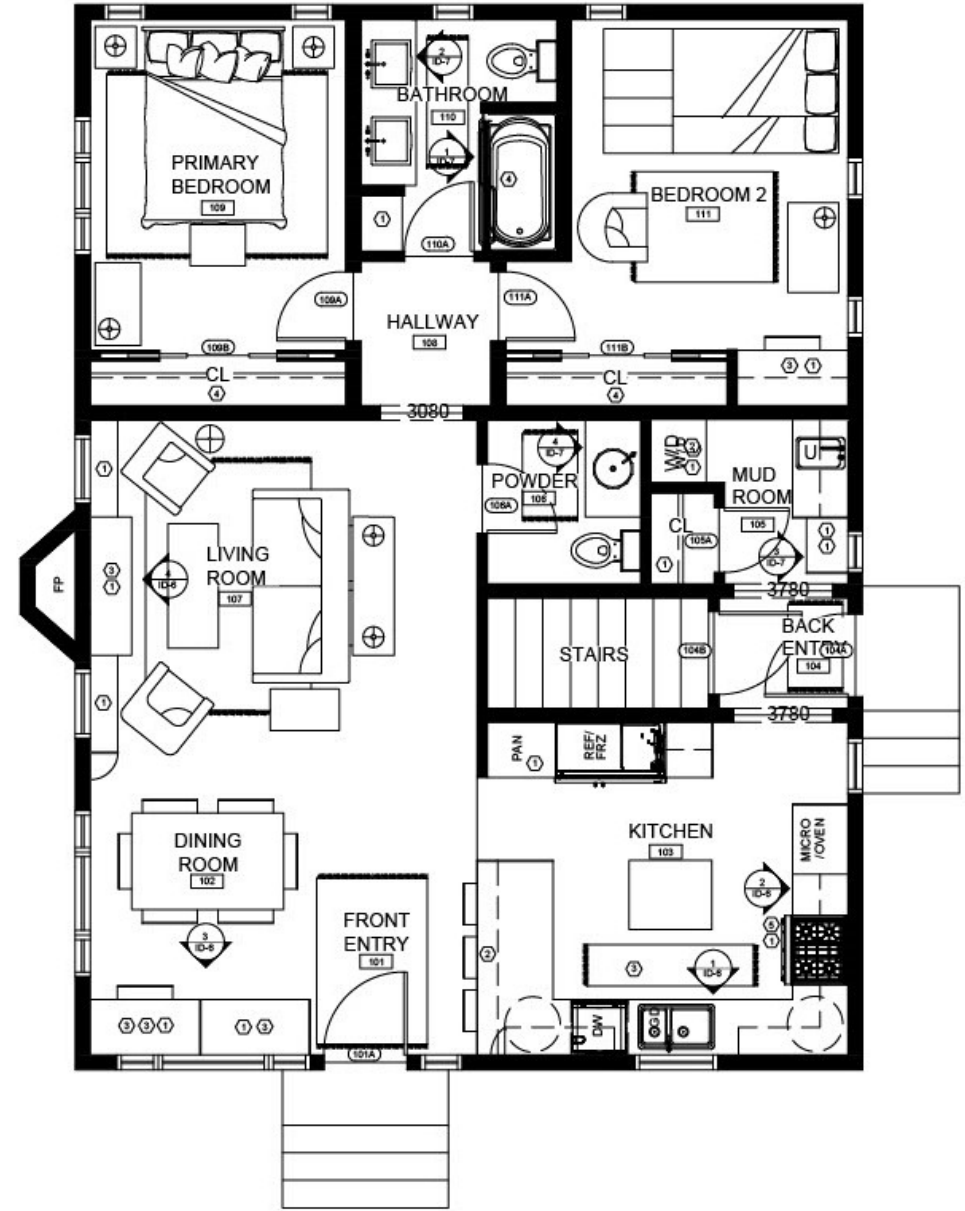
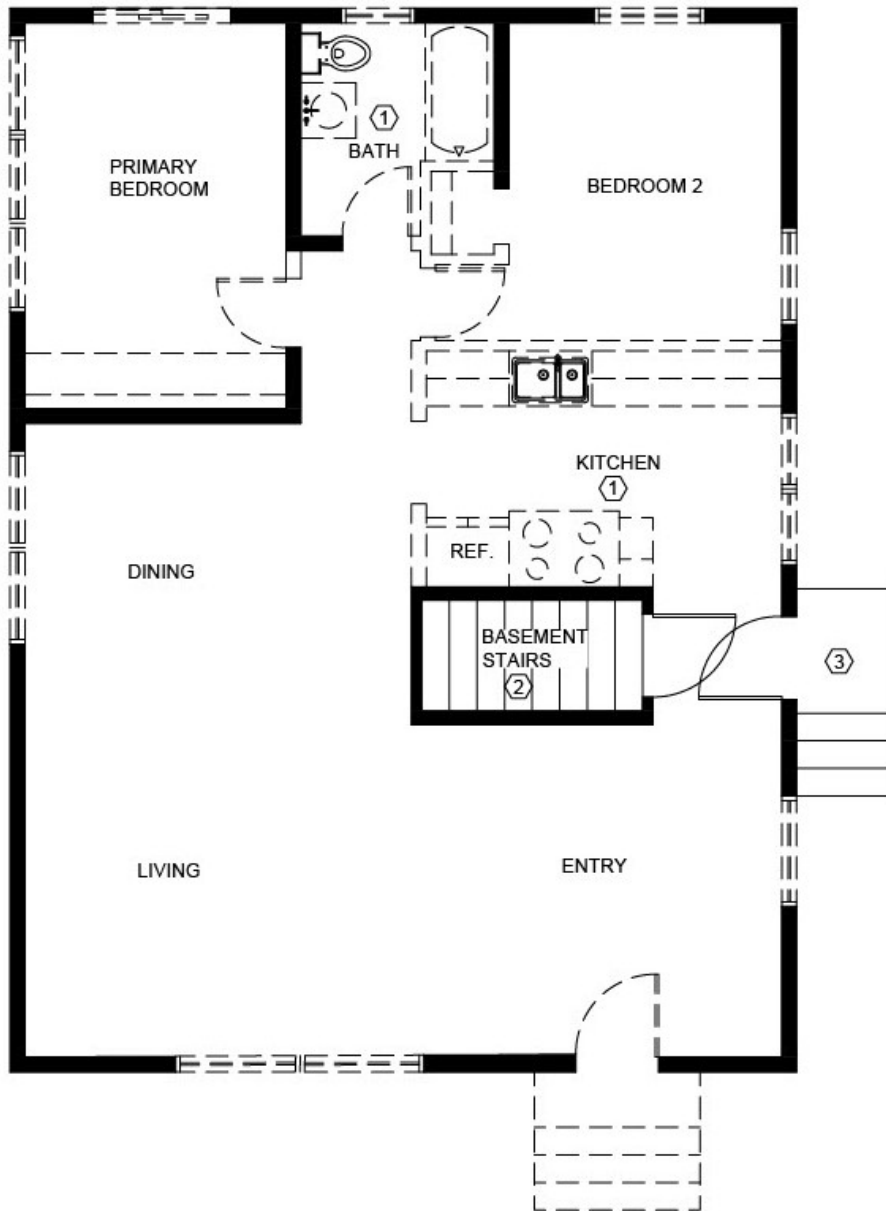


○ THE PAYTON RESIDENCE FURNITURE PLAN  
1/4" = 1'-0"

**Features:** Functionality improved by adding a mudroom with laundry and closet, powder room, and enlarged kitchen with seating  
**Skills:** Space Planning, Hand Drafting, Hand Drafted Elevations

## 03 Minneapolis Rambler Remodel Hand Drafting





**Features:** Functionality improved by adding a mudroom with laundry and closet, powder room, and enlarged kitchen with seating

**Skills:** Space Planning, Hand Drafting, Hand Drafted Elevations

## 03 Minneapolis Rambler Remodel AutoCAD Existing Conditions & Furniture Plan



BRC Highland House  
Nesbit Cocktail Table



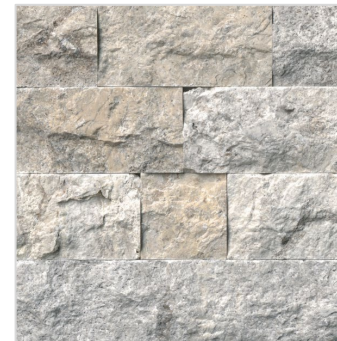
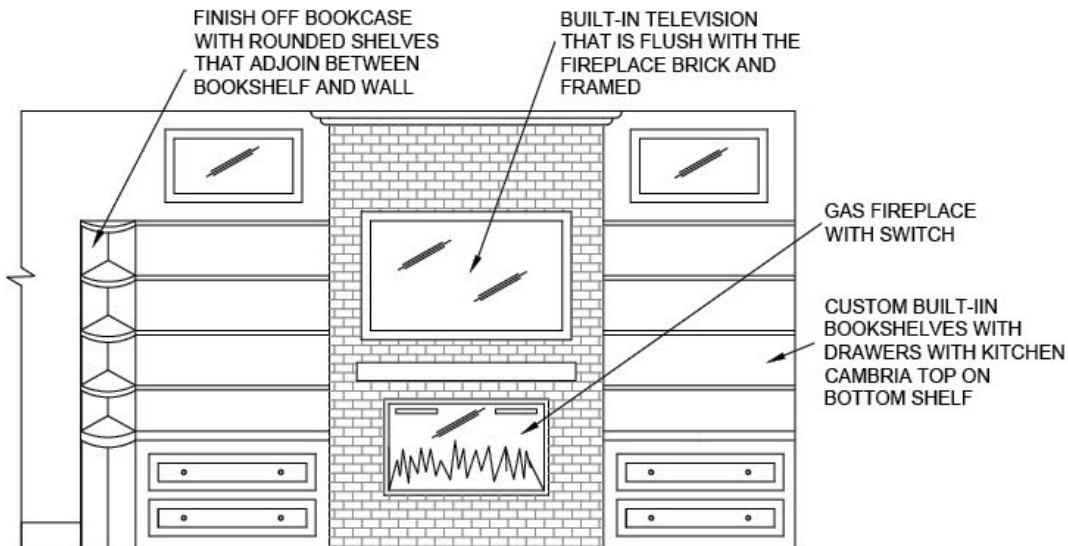
BRC Jessica Charles Lexi  
Tufted Chair



BRC Highland House  
Sutton Sofa



FK Woodbridge Fulton  
Lamp Table



The Tile Shop Claros Silver  
Travertine Tile

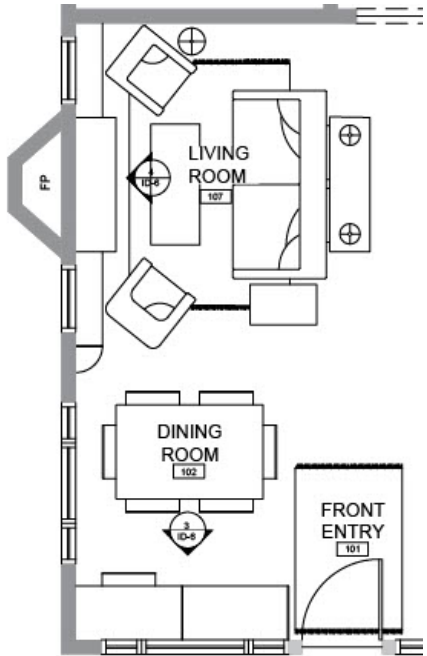


BRC Jessica Charles Serena  
Indigo Chair Fabric

Features: Built-in bookcases and drawers around brick fireplace, high end finishes  
Skills: Space planning, Selections, AutoCAD, and SketchUp rendering

## 03 Minneapolis Rambler Remodel Living Room





Cyrus Rug – Arcane Silk & Wool Area Rug



Lexington Artistica Cohesion Collection End Chair



Visual Comfort Covet Large Chandelier



Lexington Artistica Greige Linen/Cotton Chair Fabric



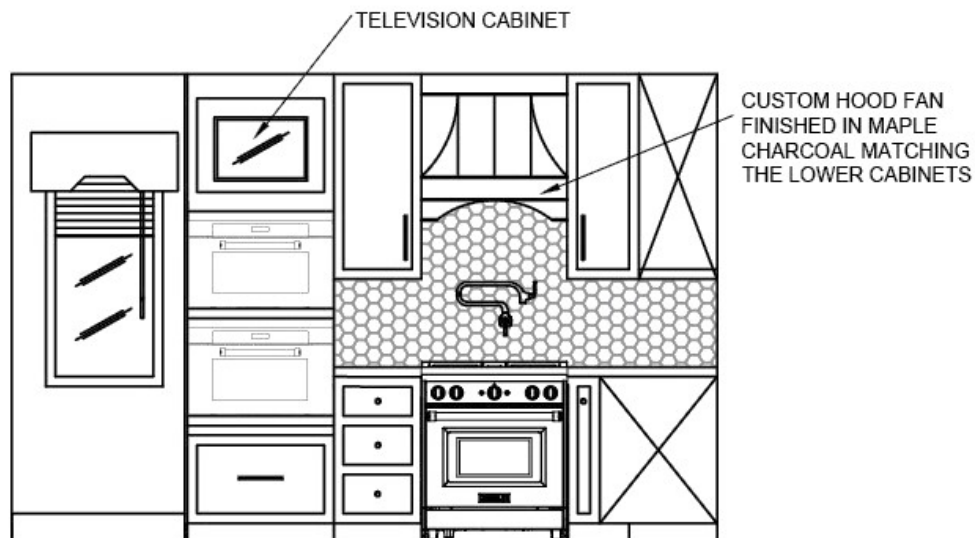
FK Fabric Chivasso Tick-Tock Valances and Shades



Lexington Artistica Cohesive Collection

## 03 Minneapolis Rambler Remodel Dining Room

**Features:** Built-in buffet and desk area, window treatments, open plan  
**Skills:** Space planning, Selections, and SketchUp rendering



Visual Comfort Liaison  
Long Pendant



Kohler Purist Professional  
Faucet



Cambria Quartz – Delgatie



The Tile Shop – Siberian  
Pearl 3in Hex Marble Tile



Sherwin Williams SW0055  
French Grey Matte Finish



The Tile Shop – Alterra Gris  
12" x 24" Porcelain Tile

**Features:** Entertainer's kitchen with high end appliances, ivory upper and wood tone lower cabinets, two ovens, island, peninsula with seating, and pantry cabinet

**Skills:** Space planning, Selections, AutoCAD, and SketchUp rendering

## 03 Minneapolis Rambler Remodel Kitchen





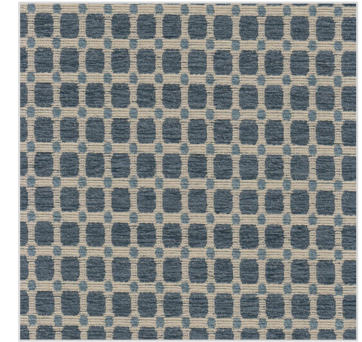
Kohler Briolette Vessel Sink Powder room



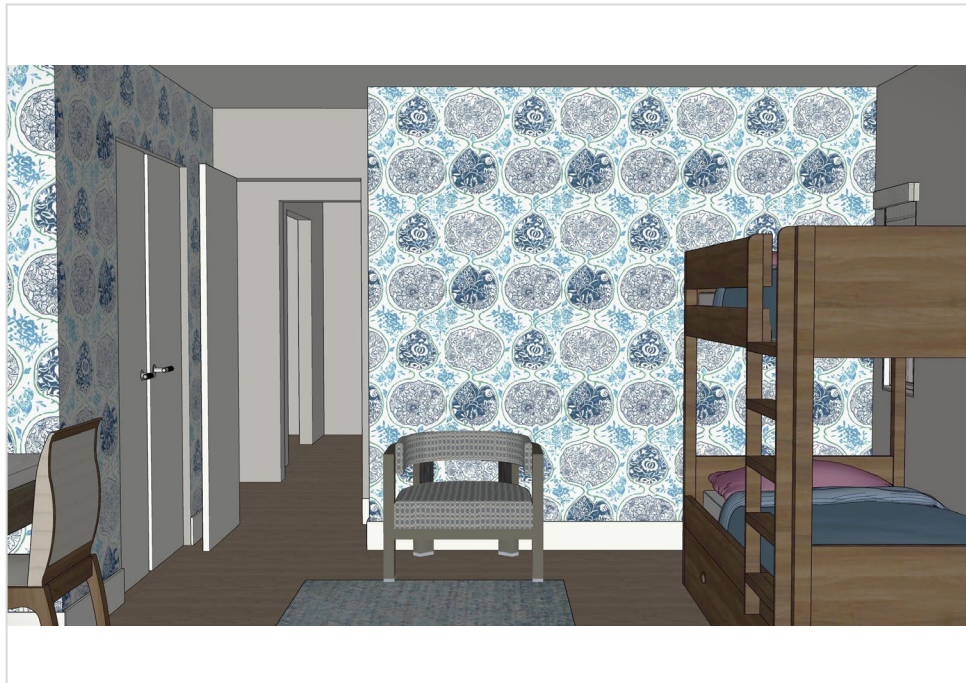
Kohler Damask Poplin 36in Vanity without countertop



Schumacher Trellis Powder Room Wallcovering



BRC Jessica Charles Chair Fabric Code Denim



Schumacher Katsugi Cobalt Turquoise 2<sup>nd</sup> Bedroom Wallcovering



BRC Jessica Charles 218 Fergie Chair 2<sup>nd</sup> Bedroom

**Features:** Powder room added for guests. High end finishes. Fun 2<sup>nd</sup> bedroom with wall covering and area rug. Built-in desk for study and a bunk bed with storage for sleep overs

**Skills:** Space planning, Selections, AutoCAD, and SketchUp rendering

## 03 Minneapolis Rambler Remodel Powder Room and 2<sup>nd</sup> Bedroom

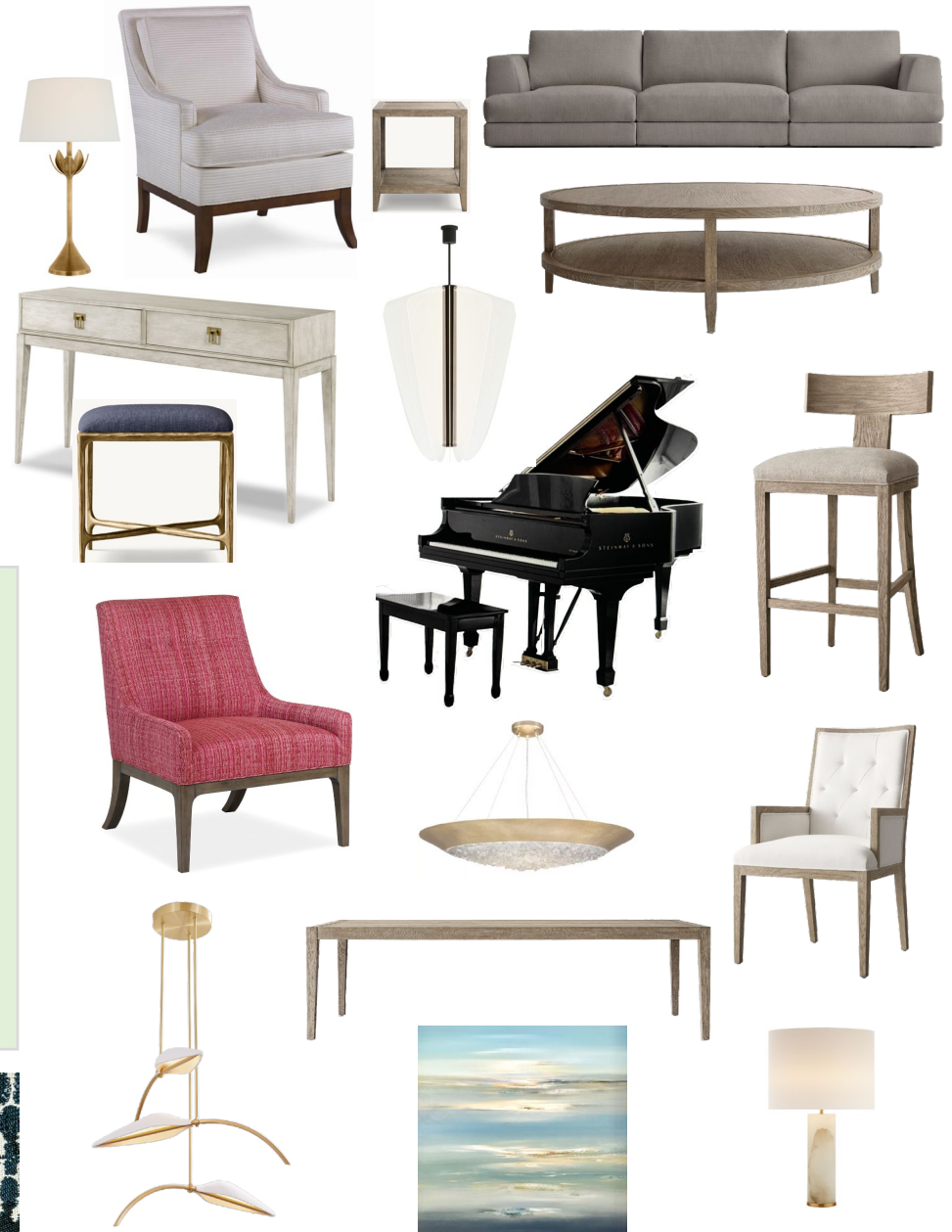
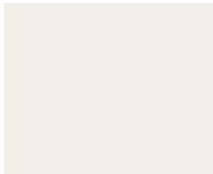




## Client Analysis

Bob and Michele Connelly are in **their late 50's**, both work in the **legal profession** and have **purchased a new Condo in Nassau, Bahamas** as their **vacation home** to unwind from their hectic schedules.

They have an opportunity **to design a new condo**. They enjoy **entertaining and cooking**. The condo requires a **large kitchen**, the ability to **dine inside and out**, a gathering **place for conversation**, a **music area** with a piano, and an **office**. The back of the **condo faces Nassau harbor**, and they want to enjoy the view. **Their design aesthetic is modern**. They would like the condo to feel **comfortable**. They would like a **spa-like primary suite** and **high-end finishes**.



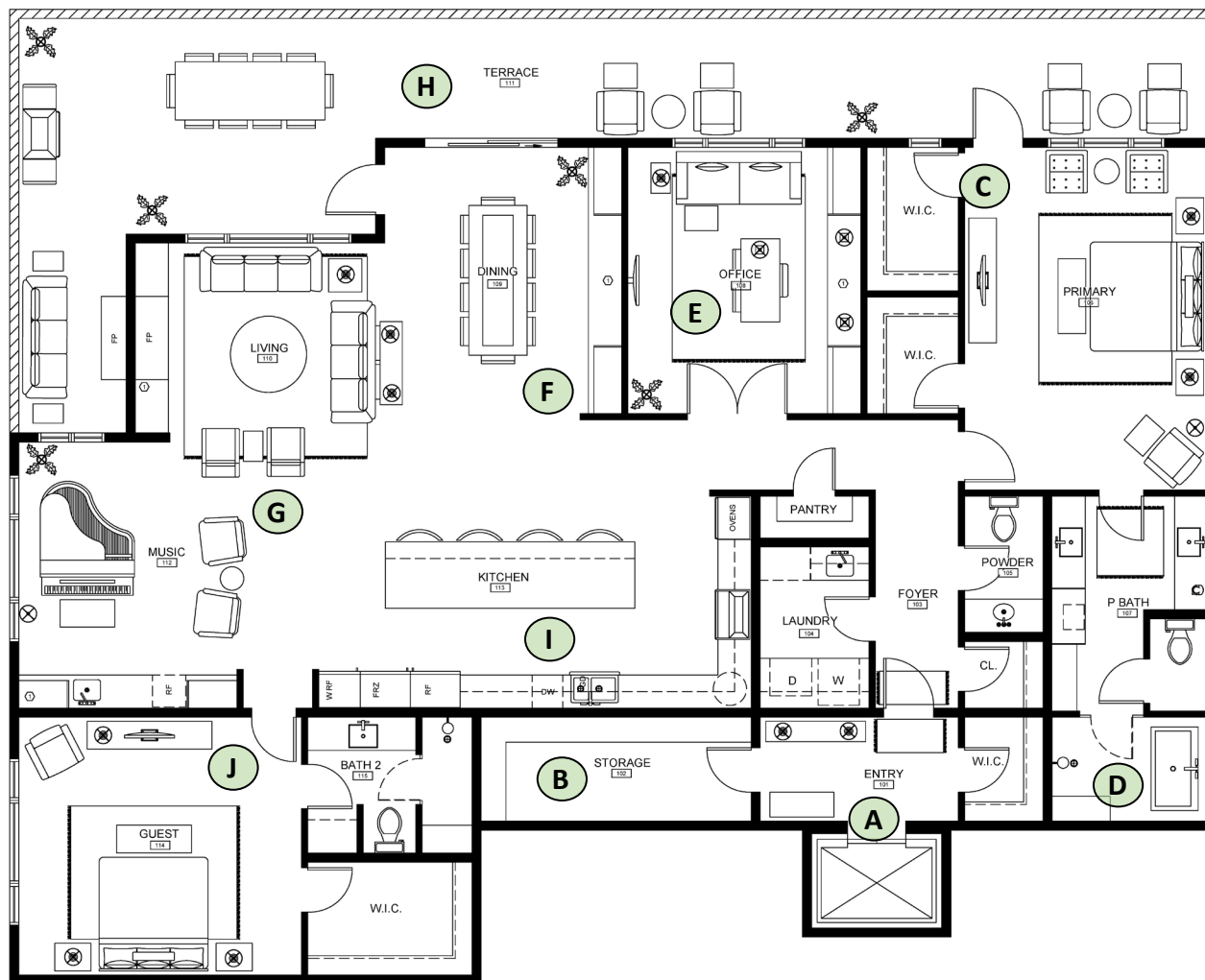
Skills: Floor plan design, Space planning, Selections, Lighting, Electrical plan, and AutoCAD construction document, and Elevations

# 04 Nassau, Bahamas New Condo

## Beach Sophisticate

White sandy beaches, turquoise sea, and a gentle sea breeze bring calmness and a smile to its visitors. This design creates an interior space that captures **the calmness of the beach with sophisticated elegance** that focuses on **modern comfort, breathtaking views, and architectural interest**. This is achieved by incorporating **seafoam green, grey, and white textures**, with navy blue, light wood, quartz, and gold accents. This home features **tray ceilings, built-in storage, an expansive deck, quartz surfaces, a modern fireplace, and oversized windows** that bring in the panoramic ocean views.





## SPACE PLAN HIGHLIGHTS

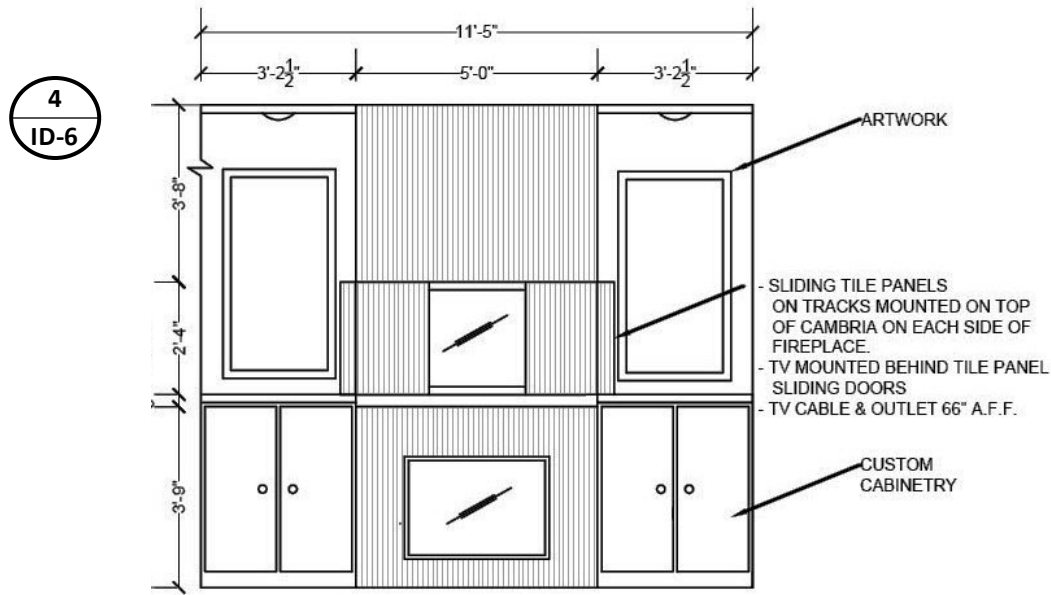
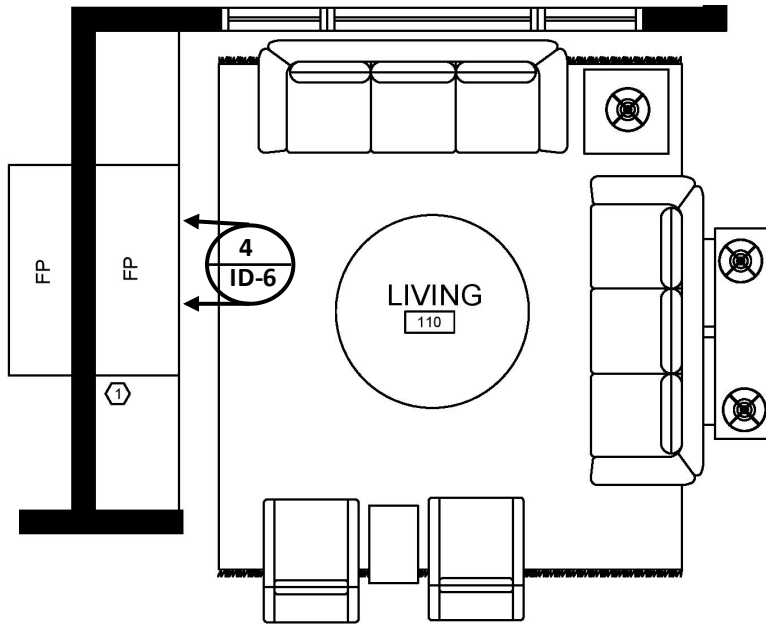
- (A)** *Enhanced security* with dual entry and private elevator
- (B)** *Storage room* for larger items
- (C)** *Two walk-in closets* in primary bedroom
- (D)** *Spa* ambiance in primary bathroom
- (E)** *Office/Den* with optional usage
- (F)** *Dining room* seating 12 with buffet
- (G)** *Open plan* for entertainment with music room
- (H)** *Large terrace* with gas grill and fireplace for entertaining
- (I)** *Large high-end chef's kitchen*
- (J)** *Guest bedroom* with ensuite

Skills: Floor plan design, Space planning, Selections, and AutoCAD construction document, and Elevations

**04 Nassau, Bahamas New Condo  
Furniture Plan Highlights**



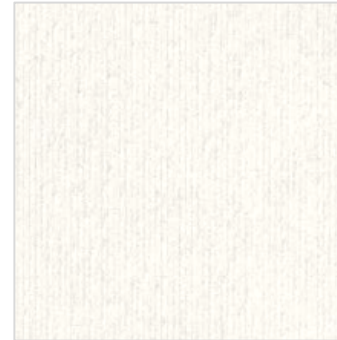




BRC Highland House  
Corey Chair



FK Stout Stapleton 2 Cypress  
Chair Fabric



Kate-lo Porcelain Tile  
12x36 Snow Fireplace



RH Monza Modular Sofa  
in Mist Performance



RH Lyra Silk/Wool Area Rug

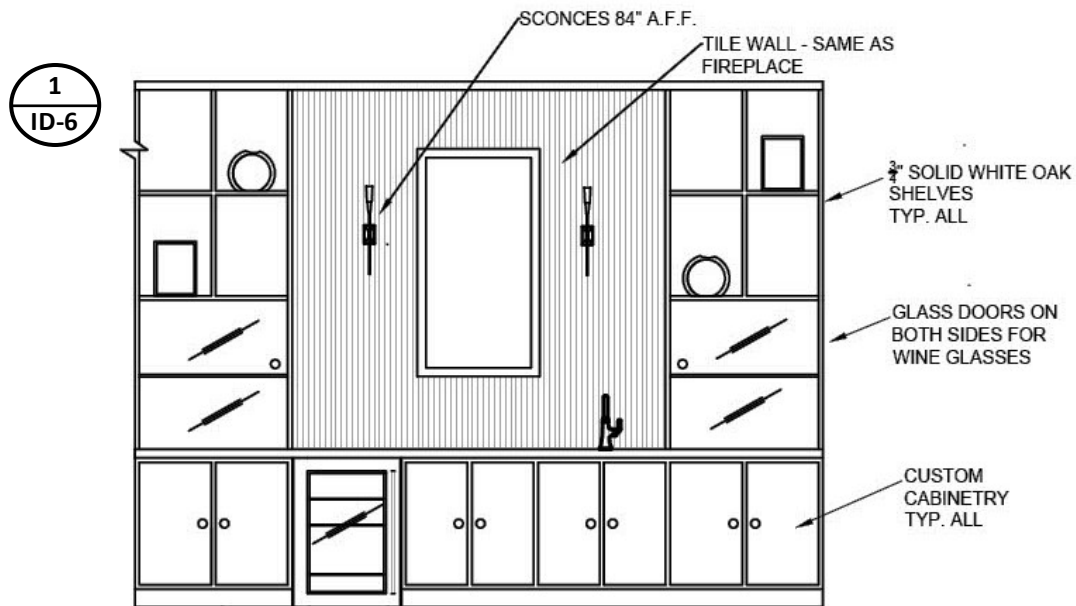
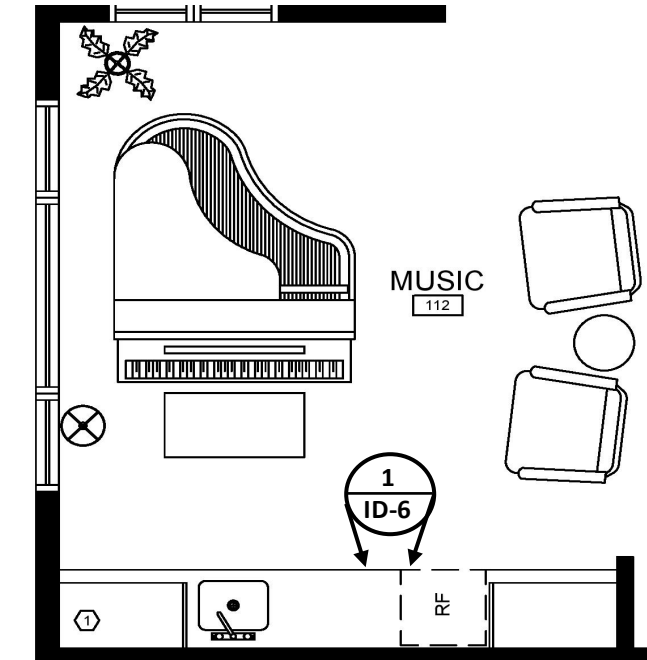


Benjamin Moore 1564  
Beach Glass in Eggshell

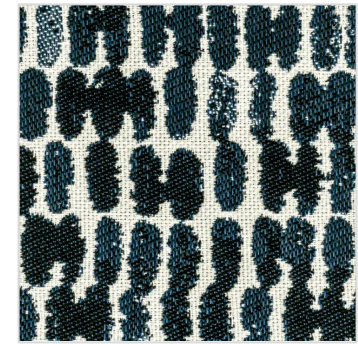
Features: Tray ceiling with ceiling fan and rope lighting, fireplace with cabinets and hidden TV cabinet  
Skills: Space planning, Selections, and AutoCAD rendering

## 04 Nassau, Bahamas New Condo Living Room in AutoCAD

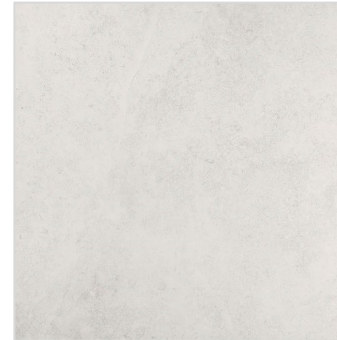




BRC Jessica Charles Rex Chair



FK Stout Textiles Shudder  
1 Indigo Chair Fabric



TileBar 24x24 Porcelain  
floor tile New Rock Perla



Steinway Baby Grand  
Piano 6ft



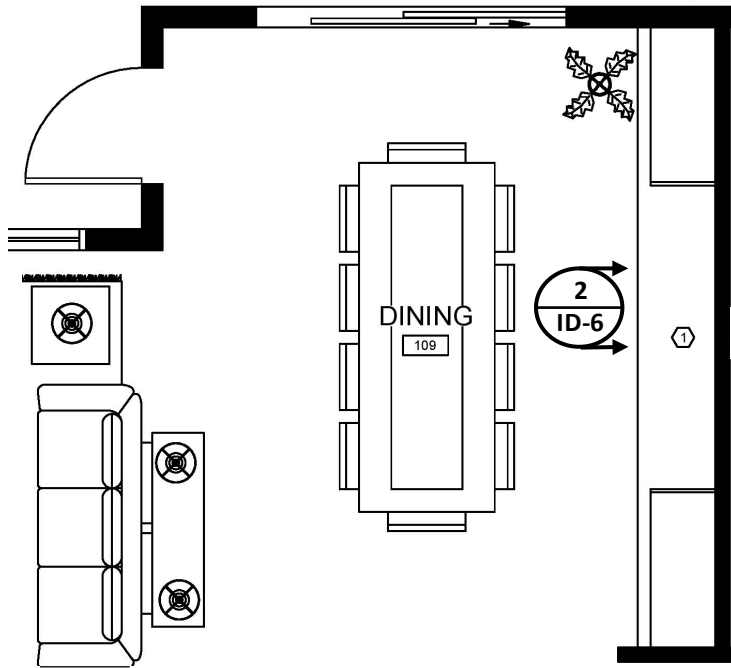
Visual Comfort Nyra 42in  
Chandelier



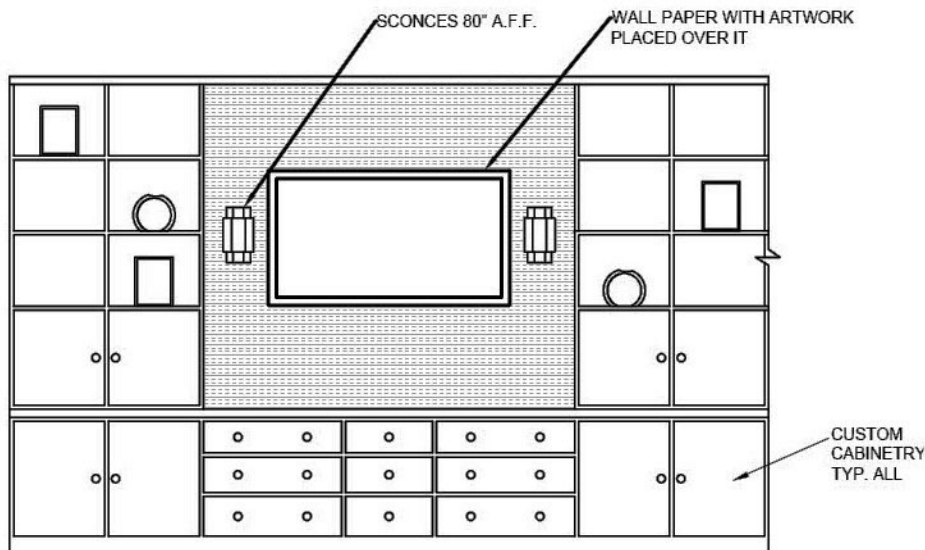
Visual Comfort Stellar  
Single tall Sconce

Features: Tray ceiling with chandelier, built-in bar  
Skills: Space planning, Selections, and AutoCAD rendering

## 04 Nassau, Bahamas New Condo Music Room in AutoCAD



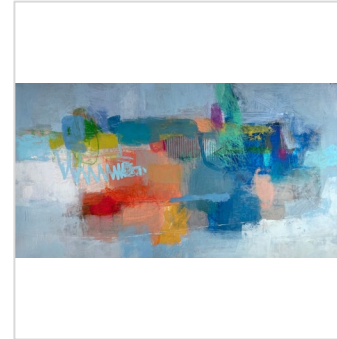
2  
ID-6



RH French Contemporary  
End Chair in Grey Oak finish



RH French Contemporary  
Dining Table Grey Oak finish



Art Resources Ursula  
Brenner Oil painting



Visual Comfort Arabelle  
Wall Sconce



FK Scalamandre Sisal Grass  
Wallcovering - Celestial

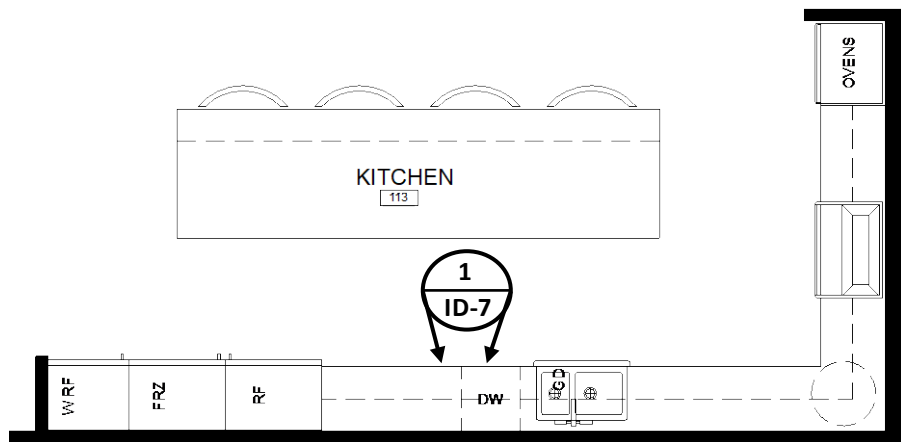


Boyd Lighting The Spire  
Leaf 9 pendants

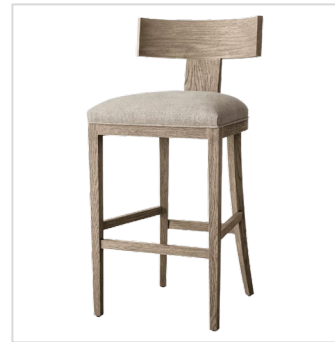
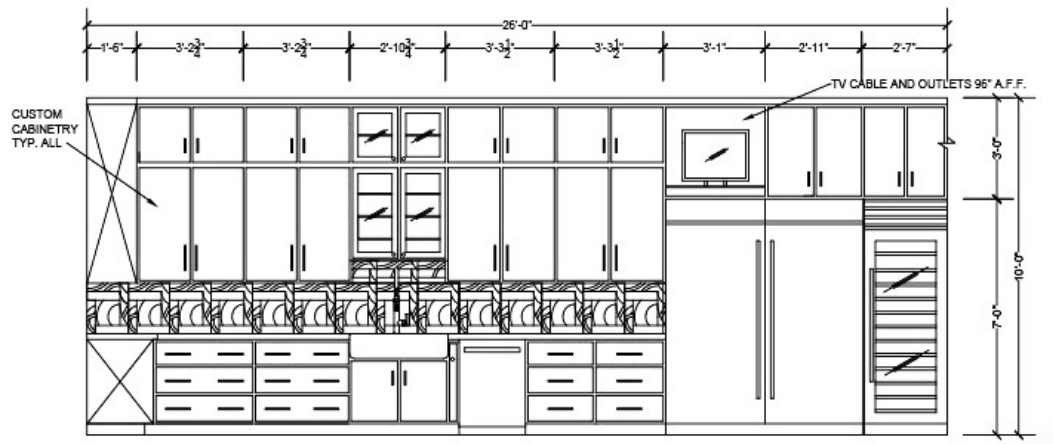
Features: Large sliding doors to expansive deck, built-in serving buffet with storage, and lighting to showcase artwork  
Skills: Space planning, selections, and SketchUp rendering

## 04 Nassau, Bahamas New Condo Dining Room in AutoCAD





1  
ID-7



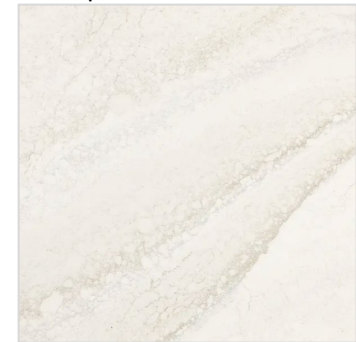
RH French Contemporary counter chair



Custom cabinetry – Bellaire in Maple Storm



Ann Saks Abstra Tile Kohler WasteLab Backsplash



Cambria Quartz countertops Everleigh



Hoodsly Custom Range Hood

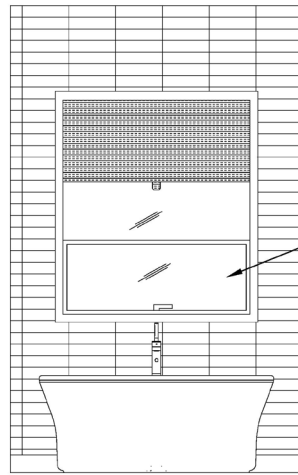
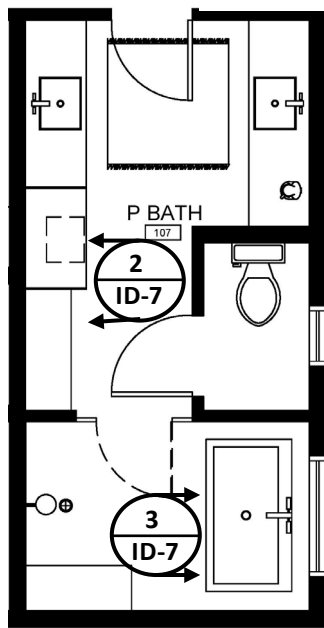


Boyd Lighting – Spire Leaf with 3 pendants

**Features:** Custom cabinetry, Wolf double ovens, Subzero refrigerator/freezer, wine refrigerator, cabinets to ceiling, farmhouse porcelain sink, and oversized island with seating for 4

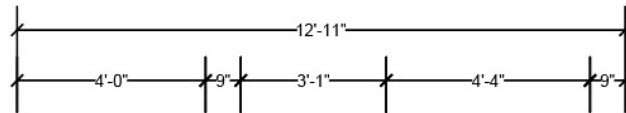
**Skills:** Space planning, Selections, and AutoCAD rendering

## 04 Nassau, Bahamas New Condo Kitchen in AutoCAD



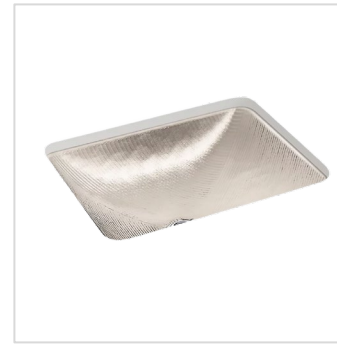
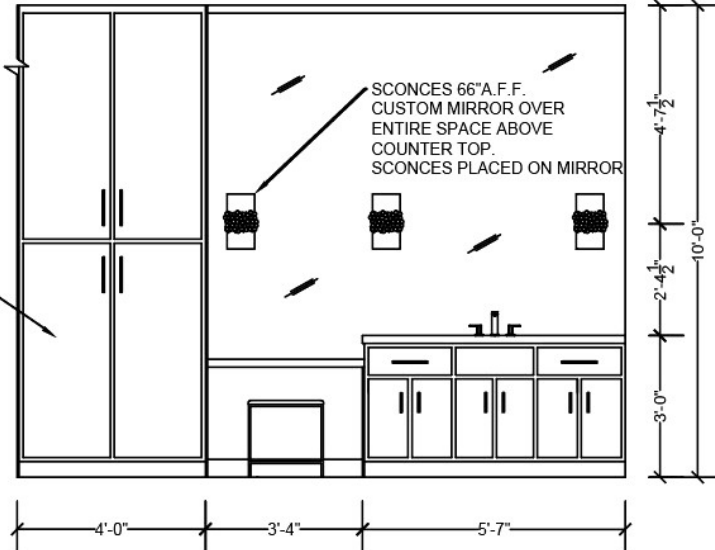
3  
ID-7

OUTWARD OPERABLE  
AWNING WINDOW WITH  
FIXED PICTURE WINDOW  
STACKED ABOVE  
AWNING WINDOW



2  
ID-7

CUSTOM  
CABINETRY  
TYP. ALL



Kohler Artistic Series  
Yepsen Sink



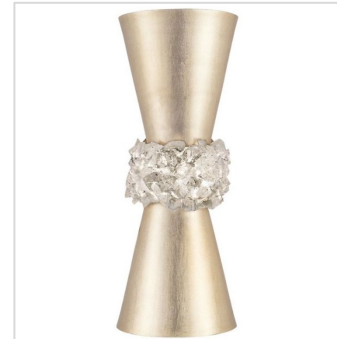
Kohler Parallel faucets in  
gold



Tile Bar Loft Seafoam 3x6  
Glass Wall tile



Tile Bar Wonderland Garden  
3x6 accent wall tile



Fine Arts Arctic Halo two  
light wall sconce



Kohler Stargaze 72in  
freestanding tub

**Features:** Large primary bathroom with custom cabinetry including linen closet, make-up table, and wet room with freestanding tub and shower with bench

**Skills:** Space planning, Selections, and AutoCAD rendering

## 04 Nassau, Bahamas New Condo Primary Bathroom in AutoCAD





*Thank you for taking the time out of your busy day to review my portfolio!  
It represents the joy and hard work in my interior design focus  
that I am very proud of sharing.*



**(612) 963-7204**



**CAZappa@comcast.net**